



CAVALLI

# QE SERIES END SUCTION PUMP

**QEL**

END  
SUCTION  
L - Long-Couple  
M - MonoBlock

-

**X**

PUMP  
SIZE  
S  
L

**00**

CONNECTION SIZE  
OUTLET (MM)  
40 - 40mm  
50 - 50mm  
80 - 80mm  
100 - 100mm

**X**

IMPELLER  
TYPE  
C - Closed  
S - Semi-Open  
R - Fully-Open  
F - Torque Flow

-

**X**

SEALING  
M - Mechanica Seal  
D - Dynamic Seal  
G - Gland Packing

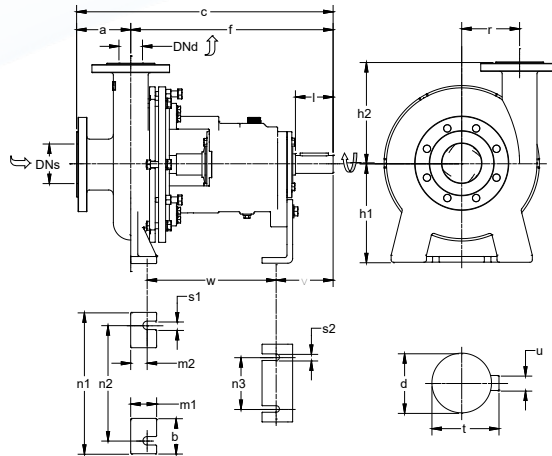
**0**

MOTOR  
FREQUENCY  
5 - 50Hz  
6 - 60Hz

**0**

MOTOR  
POLES  
2 - 2-poles  
3 - 2-poles  
(w. reducer)  
4 - 4-poles  
5 - 4-poles  
(w. reducer)  
6 - 6-poles  
7 - 6-poles  
(w. reducer)

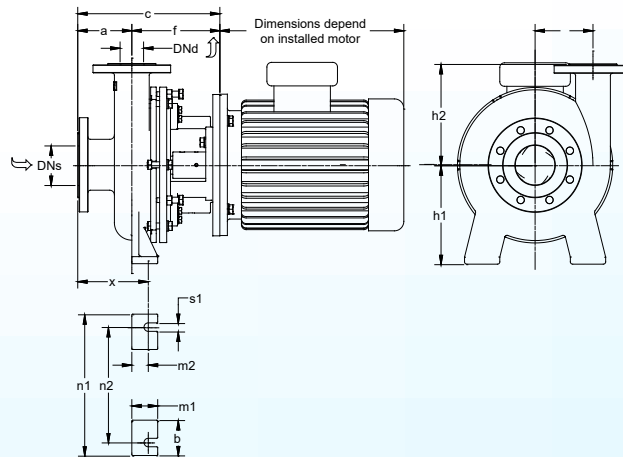
# DRAWING & DIMENSIONS



QEL Series - QEL-S / QEL-L

Dimensions in mm

PUMP TYPE	DN		PUMP DIMENSIONS							FOOT DIMENSIONS								SHAFT END				Weight (kg)		
	DNd	DNs	a	f	c	h1	h2	h3	r	b	m1	m2	n1	n2	n3	s1	s2	v	m	d	l		t	u
QEL-S 40	40	65	85	430	515	210	213	-	135	75	55	35	300	245	110	18	14	130	260	38	80	41	10	80
QEL-S 50	50	80	115	435	550		218		123										265					82
QEL-S 80	80	100	110	445	555		255		130										275					92
QEL-S 100	100	125	123	460	583		270		148										290					99
QEL-L 40	40	65	85	435	520	250	260	-	165	75	55	35	380	310	185	18	14	140	255	38	80	41	10	106
QEL-L 50	50	80	115	440	555		260		163										260					112
QEL-L 80	80	100	115	445	560		260		161										265					116
QEL-L 100	100	150	155	470	625		280		167										270					154
QEL-L 150	150	150	160	480	640	265	160	280	162															



QEM Series - QEM-S / QEM-L

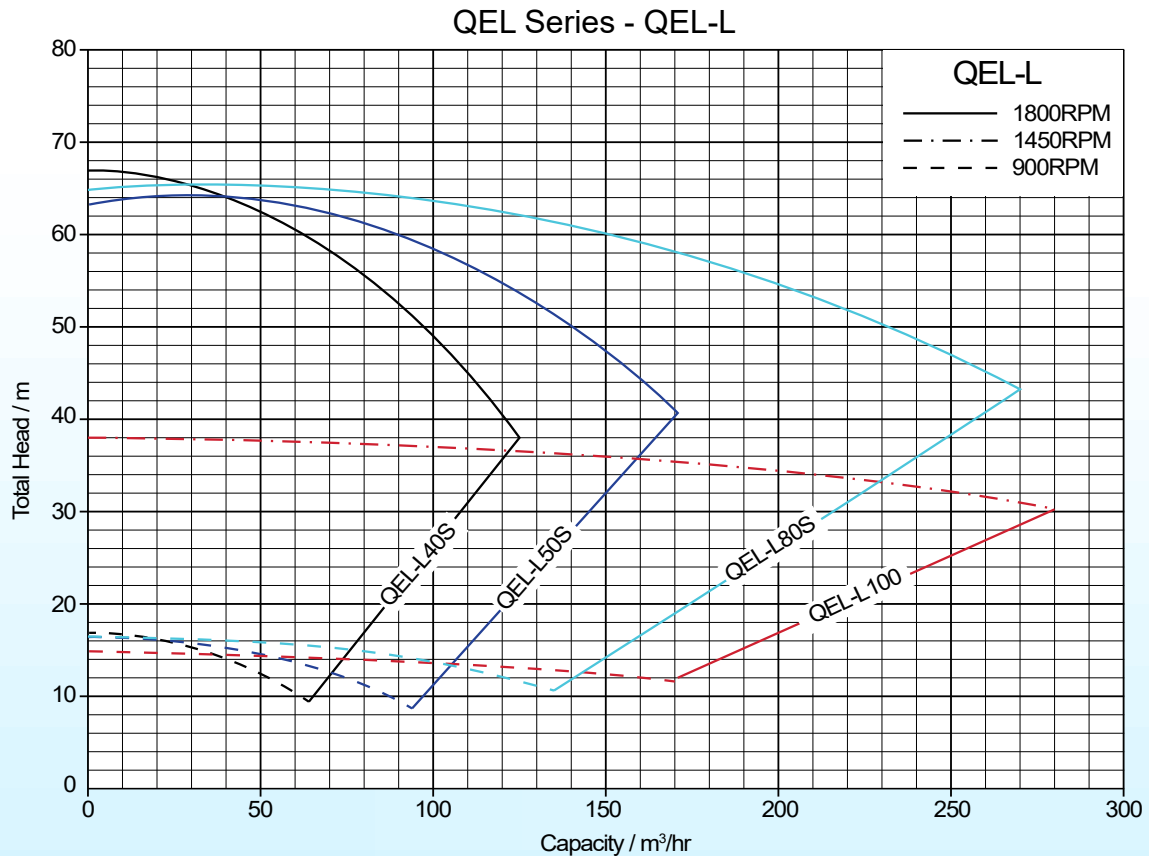
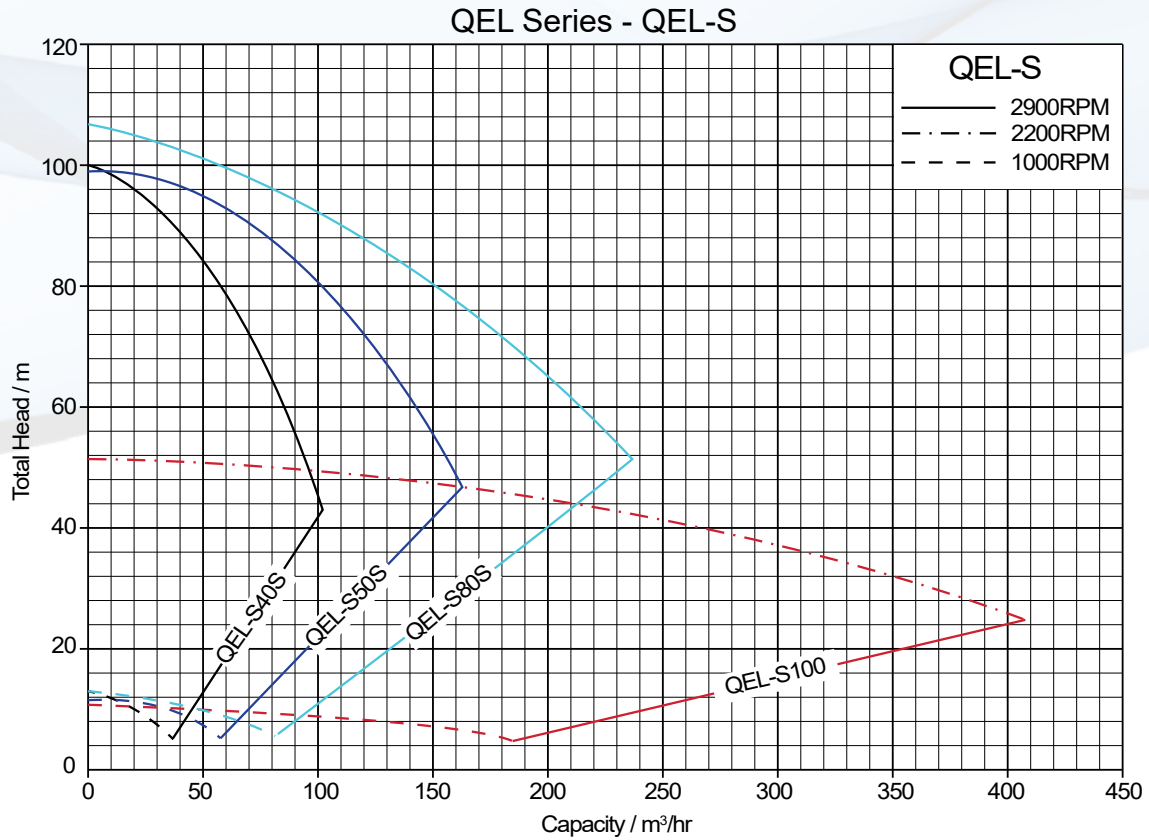
Dimensions in mm

PUMP TYPE	DN		PUMP DIMENSIONS							FOOT DIMENSIONS							Weight (kg)
	DNd	DNs	a	f	c	h1	h2	h3	r	b	m1	m2	n1	n2	s1	x	
QEM-S 40	40	65	85	185	270	210	213	-	135	75	55	35	300	245	18	125	82
QEM-S 50	50	80	115	190	305		218		123							155	84
QEM-S 80	80	100	110	200	310		255		130							155	94
QEM-L 40	40	65	85	190	275	250	260	-	165	75	55	35	380	310	18	130	114
QEM-L 50	50	80	115	195	310		260		163							160	120
QEM-L 80	80	100	115	200	315		260		161							155	124

All dimensions are ± 5mm unless otherwise stated. Not to be used for construction.  
 Dimensions are based on semi-open / fully-open impeller.  
 Closed impeller, plus (+) another 6mm to the dimensions of f, c and w.  
 Torque flow impeller, plus (+) another 30mm to the dimensions of f, c and w.  
 Model QEM-S and QEM-L with motor horsepower 15HP or 20HP, plus (+) another 40mm to the dimensions of f and C.  
 Flange dimensions according to ISO2084-PN16

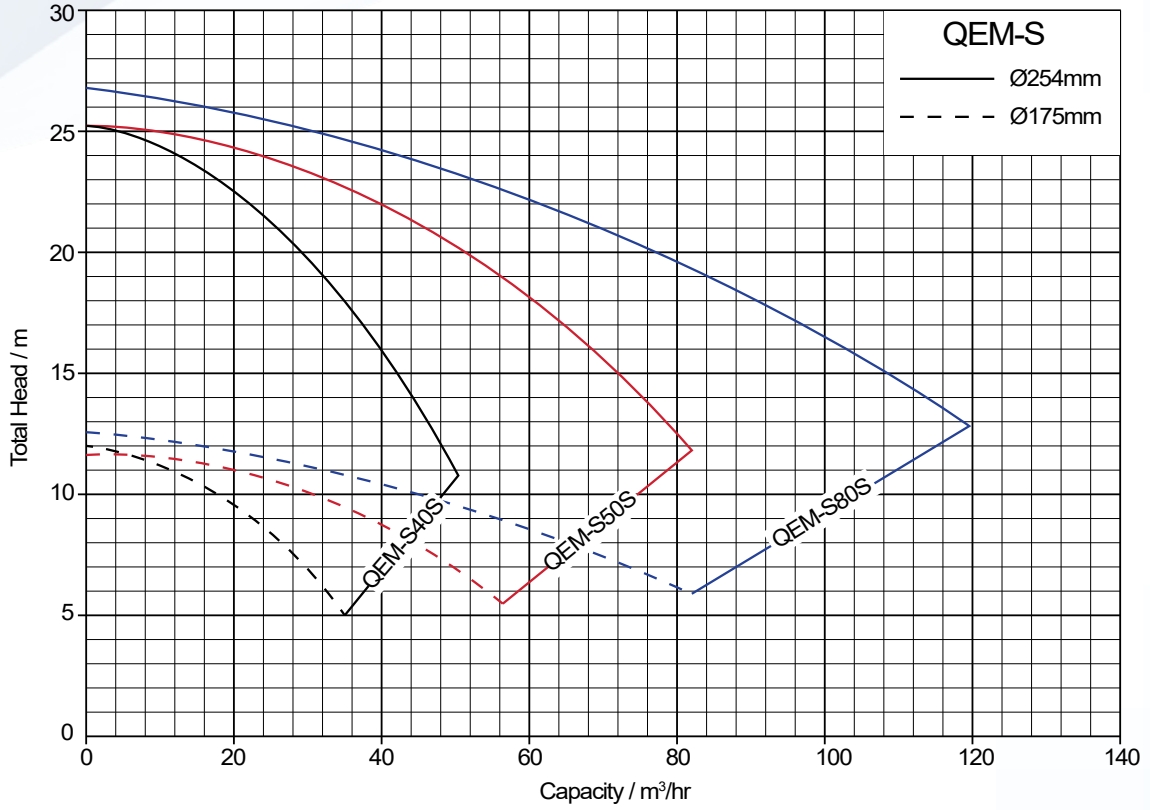
# CENTRIFUGAL PUMP

## PERFORMANCE CURVES

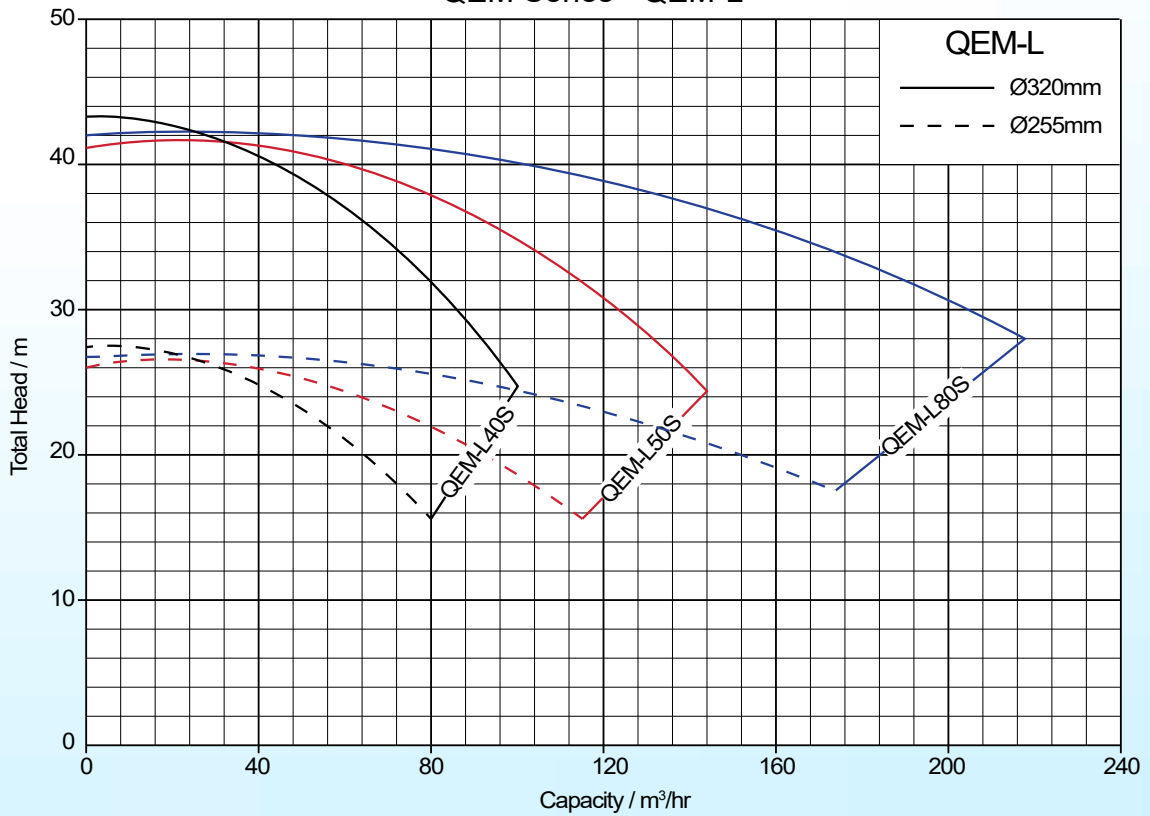


All curves are based on semi-open impeller models, except for QEL-S 100R.  
Curves for QEL-S and QEL-L are based on full size impeller for each model.  
Curves for QEM-S and QEM-L are based on pump speed 1450RPM for each model.  
Performance curves are for reference only.  
Product specification are subject to changes without prior notice.

QEM Series - QEM-S



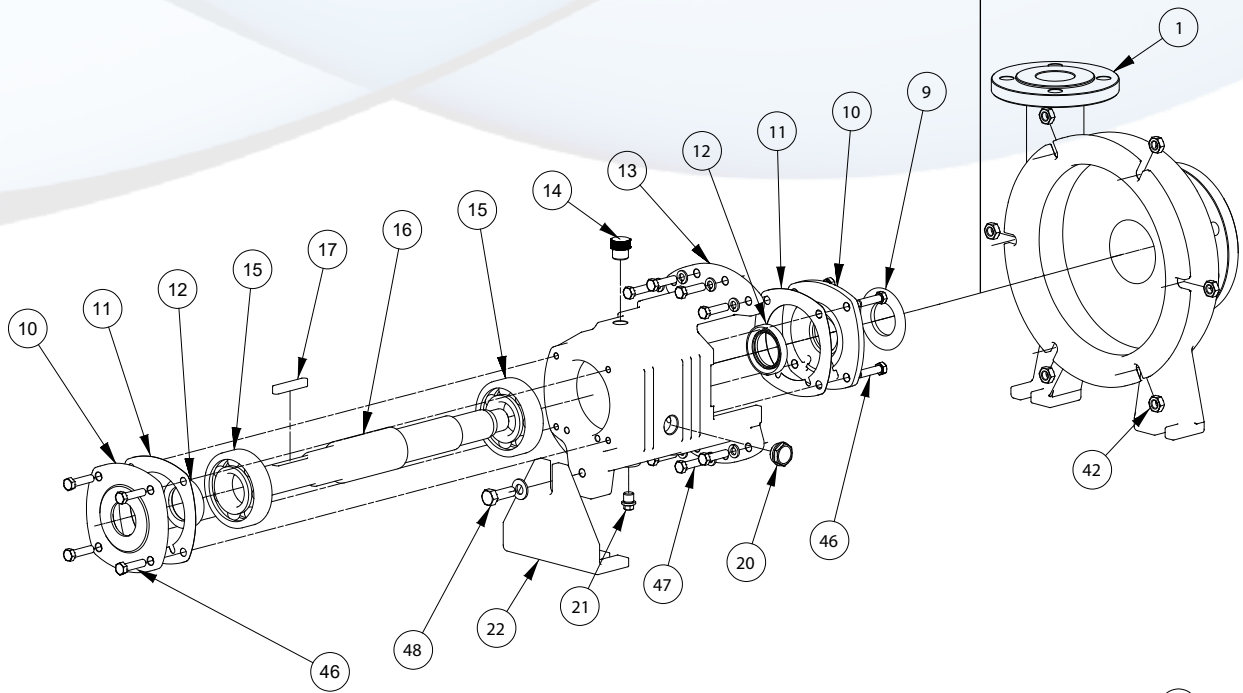
QEM Series - QEM-L



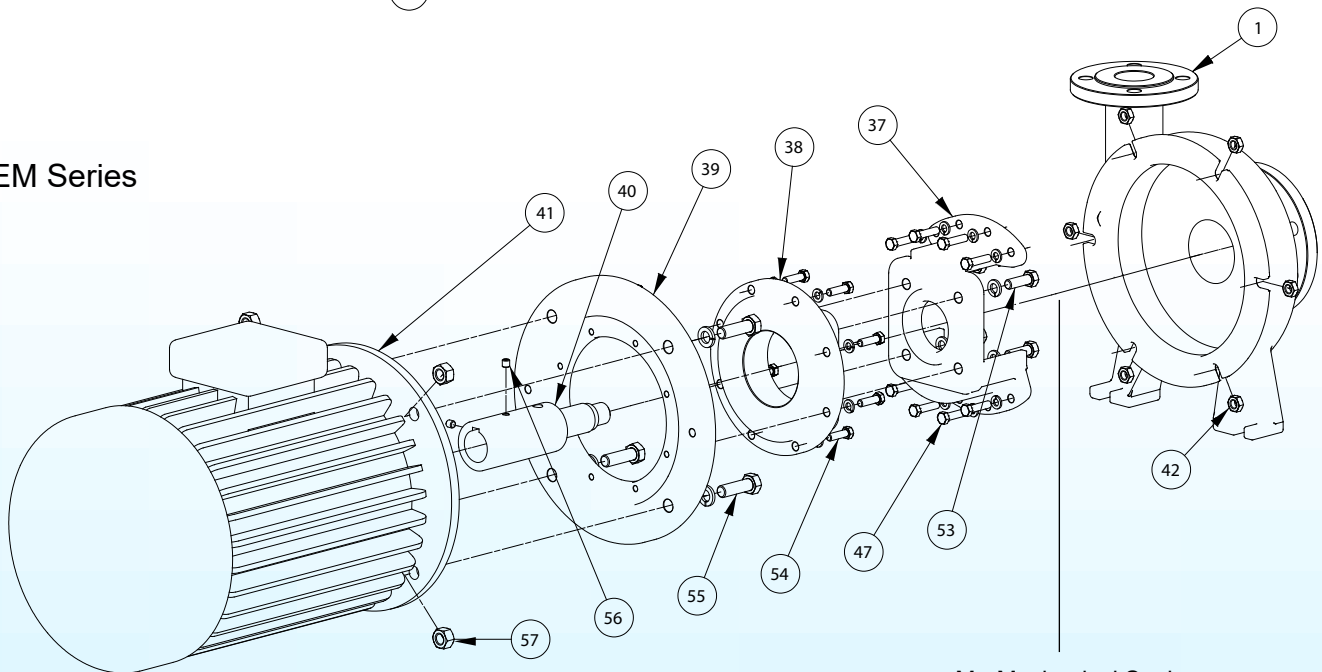
# CENTRIFUGAL PUMP

## PUMP EXPLODED VIEW

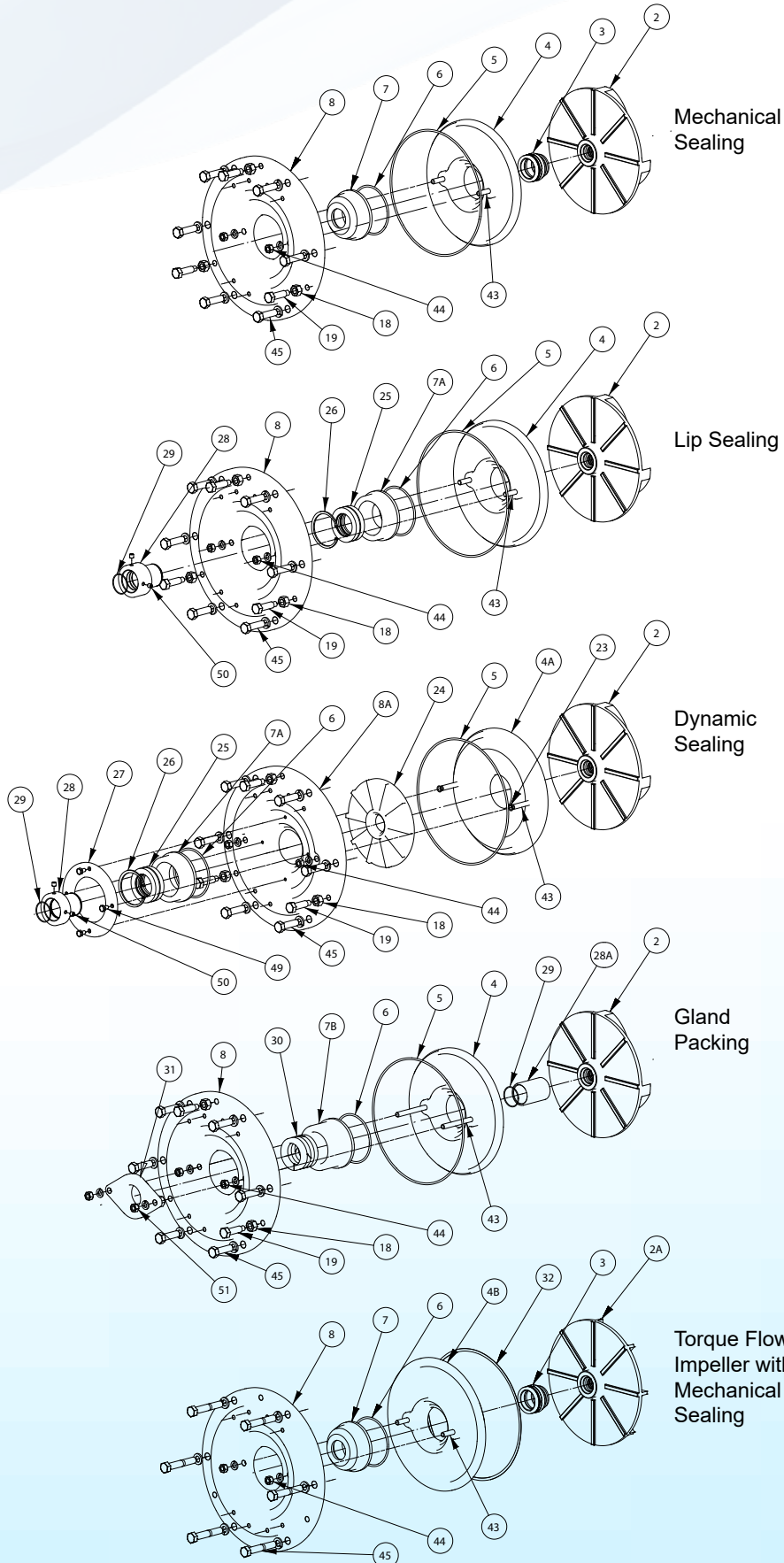
QEL Series



QEM Series



## PARTS LIST



No.	Parts	Standard Material
1	Casing	Stainless Steel
2	Semi-Open Impeller	Stainless Steel
2A	Torque Flow Impeller	Stainless Steel
3	Mechanical Seal	Stainless Steel
4	Casing Cover for Mechanical Sealing, Lip Sealing and Gland Packing	Carbon vs Ceramic
4A	Casing Cover for Dynamic Sealing	Stainless Steel
4B	Casing Cover for Torque Flow Impeller with Mechanical Sealing, Lip Sealing and Gland Packing	Stainless Steel
5	Casing Cover O-Ring	Synthetic Rubber
6	Sealing Chamber O-Ring	Synthetic Rubber
7	Sealing Chamber for Mechanical Sealing	Stainless Steel
7A	Sealing Chamber for Lip Sealing and Dynamic Sealing	Stainless Steel
7B	Sealing Chamber for Gland Packing	Stainless Steel
8	Adapter Extension Ring for Mechanical Sealing, Lip Sealing and Gland Packing	Cast Iron
8A	Adapter Extension Ring for Dynamic Sealing	Stainless Steel
9	Deflector	Synthetic Rubber
10	Bearing Cover	Cast Iron
11	Bearing Cover Gasket	Oil Proof Paper
12	Oil Seal	Synthetic Rubber
13	Bearing Bracket	Cast Iron
14	Oil Cover	Aluminium Alloy
15	Bearing	Steel
16	Shaft	Stainless Steel
17	Shaft End Key	Stainless Steel
18	Jam Nut	Steel
19	Clearance Adjusting Screw	Steel
20	Oil Gauge	Plastic Threaded
21	Bearing Bracket Drain Plug	Galvanise Steel
22	Support Foot	Cast Iron
23	Casing Cover Stud O-Ring	Synthetic Rubber
24	Expeller	Stainless Steel
25	Lip Seal	Synthetic Rubber + PTFE
26	Cir Clip	Steel
27	Sealing Chamber Holding Bracket	Cast Iron
28	Shaft Sleeve for Lip Sealing and Dynamic Sealing	Stainless Steel
28A	Shaft Sleeve for Gland Packing	Stainless Steel
29	Shaft Sleeve O-Ring	Synthetic Rubber
30	Packing	Cotton
31	Gland	Stainless Steel
32	Casing Cover Gasket	Asbestos Sheet
33	Casing Drain Plug	Stainless Steel
34	Venting Plug	Stainless Steel
35	Casing Drain Cover	Stainless Steel
36	Casing Drain Cover Gasket	Synthetic Rubber
37	Frame Adaptor	Cast Iron
38	Motor Frame Adaptor	Cast Iron
39	Motor Adaptor Extension Ring	Cast Iron
40	Motor Extension Shaft	Stainless Steel
41	Flange Mounted Motor	-
42	Casing Nut	Steel
43	Casing Cover Stud	Steel
44	Casing Cover Nut	Steel
45	Casing Bolt	Steel
46	Bearing Cover Bolt	Steel
47	Adaptor Extension Ring Bolt	Steel
48	Support Foot Bolt	Steel
49	Sealing Chamber Holding Bracket Bolt	Steel
50	Shaft Sleeve Set Screw	Steel
51	Gland Nut	Steel
52	Casing Drain Cover Bolt	Steel
53	Motor Frame Adaptor Bolt	Steel
54	Motor Adaptor Extension Ring Bolt	Steel
55	Motor Bolt	Steel
56	Motor Extension Shaft Set Screw	Steel
57	Motor Nut	Steel